

# 7

## PRACTICAL ENGLISH

Asking for and giving directions  
Prepositions of place  
Polite intonation

Is there a bank near here?  
Yes, go straight on and turn left. It's on the right.

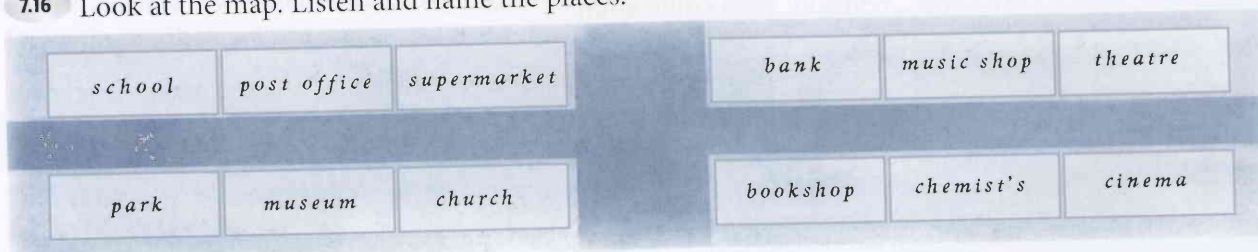
# Is there a bank near here?

## 1 ASKING WHERE PLACES ARE

a 7.15 Listen and repeat the words.



b 7.16 Look at the map. Listen and name the places.



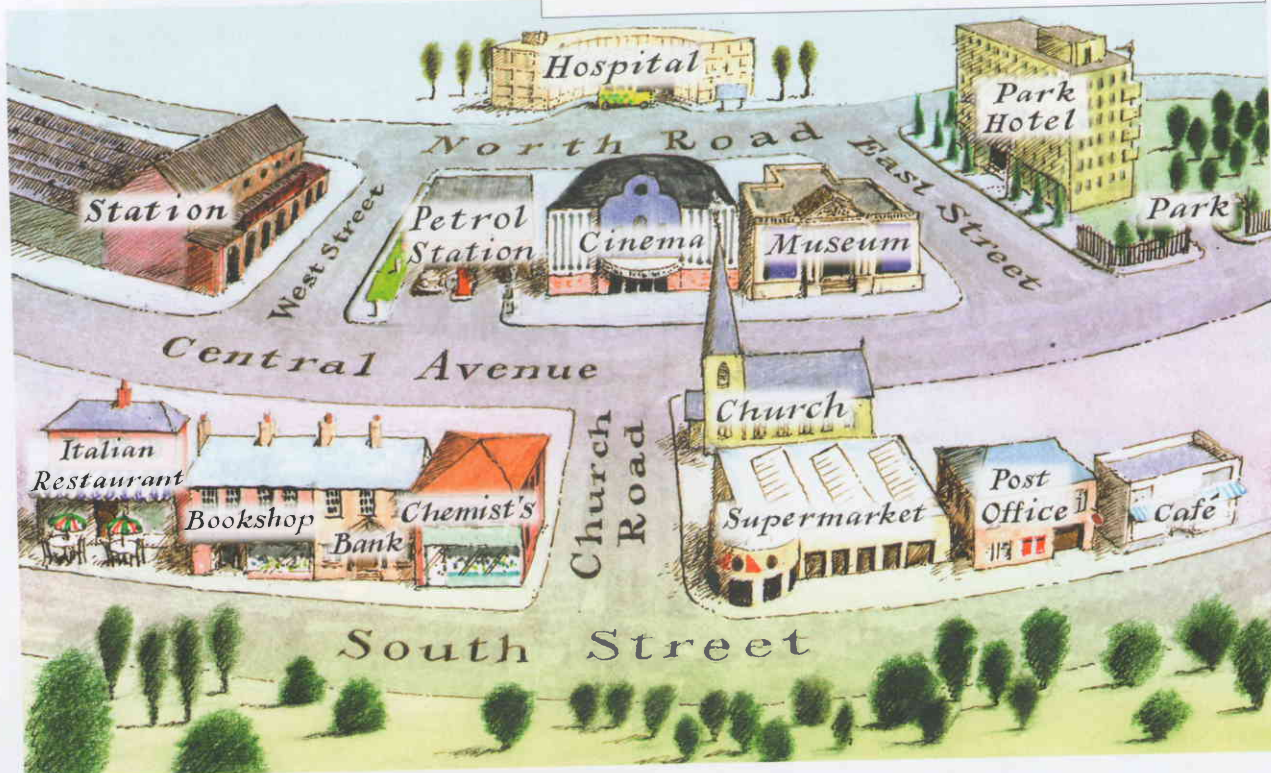
c Practise in pairs.

Where's the cinema?

It's opposite the theatre.

d 7.17 Look at the map and the names of the streets and buildings. Listen and complete the dialogue with two places.

A Excuse me. Is there a <sup>1</sup> \_\_\_\_\_ near here?  
B Yes, there's one in South Street, next to the <sup>2</sup> \_\_\_\_\_.  
A Thanks.



e 7.18 Listen and repeat the dialogue. Copy the rhythm and polite intonation.

f Practise in pairs. Choose places on the map.

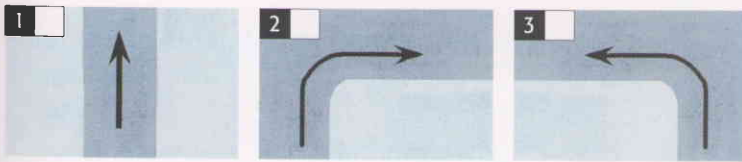
Excuse me. Is there a ... near here?

Yes, there's one in...

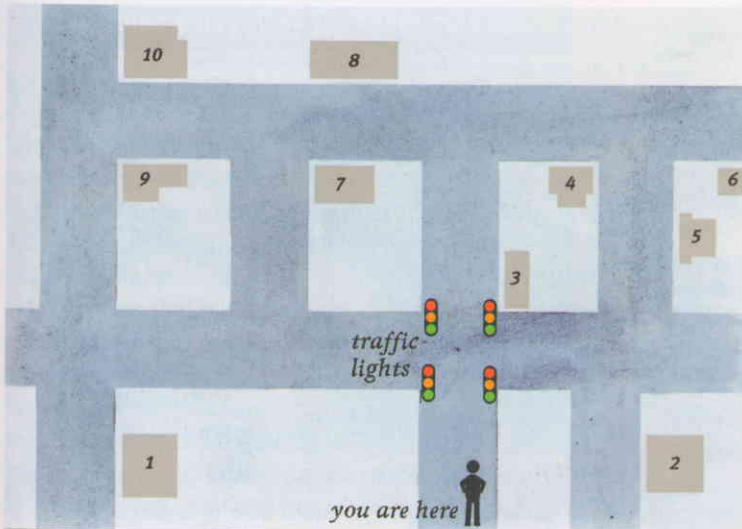
## 2 UNDERSTANDING & GIVING DIRECTIONS

a 7.19 Match the words and pictures. Listen and repeat.

A Turn right. B Turn left. C Go straight on.



b 7.20 Listen to the dialogue. Which building (1-10) is the bus station?



**Tourist** Excuse me. Can you help me?  
**Man** Sure.  
**Tourist** Where's the bus station, please?  
**Man** Go straight on and turn right. Turn right again and it's on the left.  
**Tourist** Thanks very much.  
**Man** That's OK.

c 7.21 Listen to two more tourists. Which building (1-10) is ...?

the petrol station  the museum

d In pairs, practise the dialogue in b.

e In pairs, roleplay directions.



A You're going to give B directions to **the Park Hotel**. Choose a building 1-10. You're going to ask B for directions to **the hospital**. B speaks first.

B You're going to ask A for directions to **the Park Hotel**. You speak first. You're going to give A directions to **the hospital**. Choose a building 1-10.

**B** Excuse me. Can you help me?  
Where's the Park Hotel, please?

**A** Go straight on and then turn ...

## 3 PEOPLE IN THE STREET

Is there a / an ... near here?

a 7.22 Listen to Suzy answering the question and complete the place and directions.



1 **Place** \_\_\_\_\_  
 2 **Directions** 'Yes, there's one on London Road, \_\_\_\_\_ the \_\_\_\_\_.'

b 7.23 Now listen to four more people and complete the information.



1 **Place** \_\_\_\_\_  
 2 **Directions** 'Yes, turn \_\_\_\_\_, it's on the right, \_\_\_\_\_ the hotel.'



1 **Place** \_\_\_\_\_  
 2 **Directions** 'There is, yes. Go \_\_\_\_\_, it's on the \_\_\_\_\_.'



1 **Place** \_\_\_\_\_  
 2 **Directions** 'Yes, there is. It's \_\_\_\_\_ the coffee bar and the \_\_\_\_\_.'



1 **Place** \_\_\_\_\_  
 2 **Directions** 'Yes, it's \_\_\_\_\_.'

### WORDS AND PHRASES TO LEARN

Excuse me. Where's the *bank*?  
 Can you help me?  
 Is there a *petrol station* near here?  
 Yes, there's one on the corner.  
 It's between the *bank* and the *post office*.  
 It's opposite the *chemist's*.  
 It's next to the *bookshop*.  
 Go straight on.  
 Turn right / left.  
 It's on the right / left.