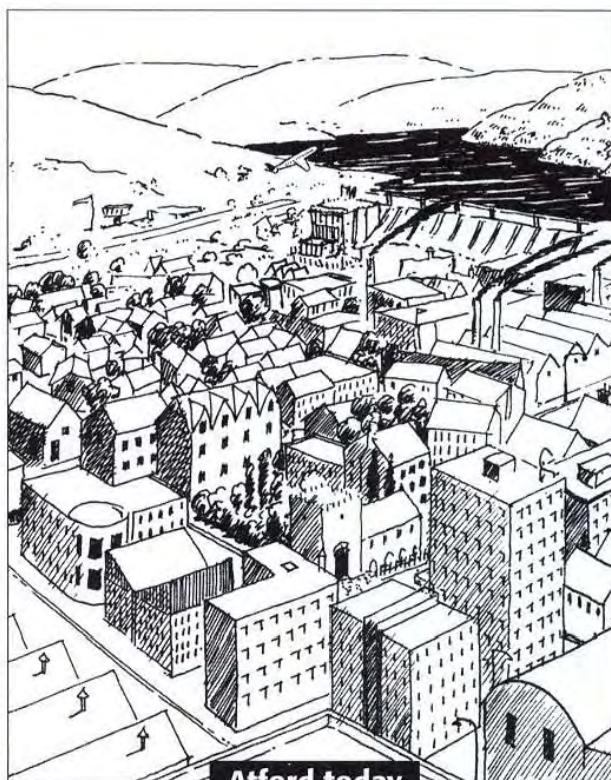




Atford, 1800



Atford today

**a** Write  or  sentences about Atford in 1800 with *There was(n't)/There were(n't) + a/an, some, or any.*

- 1 river There was a river.
- 2 tall buildings \_\_\_\_\_.
- 3 trees \_\_\_\_\_.
- 4 church \_\_\_\_\_.
- 5 airport \_\_\_\_\_.
- 6 factories \_\_\_\_\_.

**b** Make questions about the same things in Atford today. Test your partner's memory.

- A *Is there a river today?*  
B *No, there isn't.*

**c** Tick (✓) correct phrases. Correct the wrong ones.

- 1 We didn't went to the cinema yesterday. We didn't go
- 2 When did you see John and Sue? ✓
- 3 I bought this bag in Milan. \_\_\_\_\_
- 4 They payed by credit card. \_\_\_\_\_
- 5 Did he drove home very fast last night? \_\_\_\_\_
- 6 Mary stayed at home because she was tired. \_\_\_\_\_
- 7 That book is good. I read him yesterday. \_\_\_\_\_
- 8 We're late. Can you take us to the station? \_\_\_\_\_
- 9 Anna likes Bill, but he doesn't like she. \_\_\_\_\_
- 10 I don't have my glasses. I left it on the bus. \_\_\_\_\_