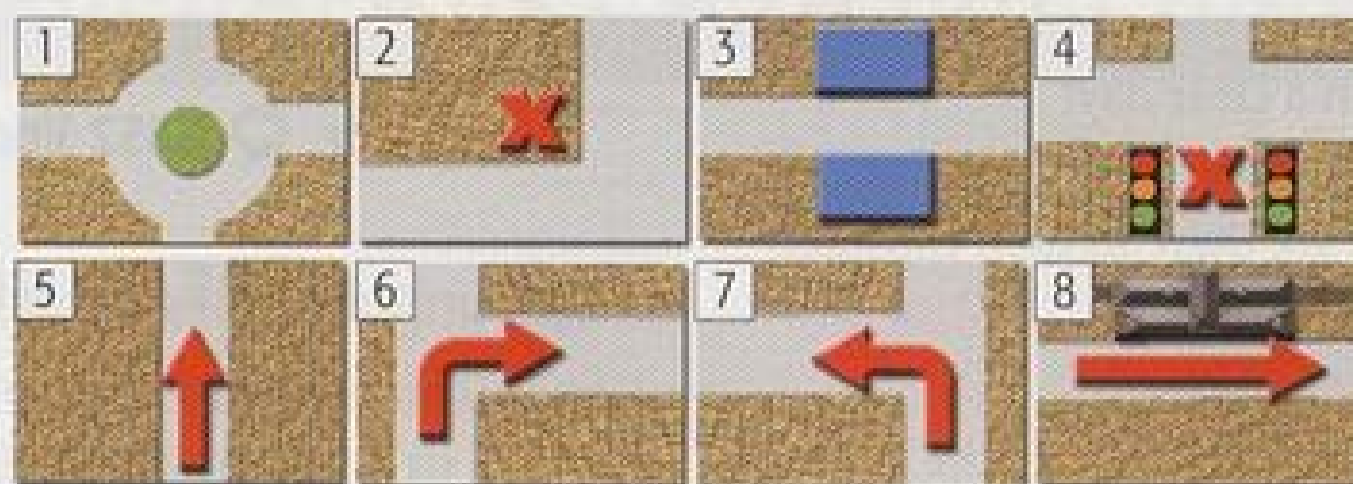


VOCABULARY directions

a Match the words and pictures.

- on the corner
- at the traffic lights
- a roundabout
- opposite



- turn left
- turn right
- go straight on
- go past (*the station*)

b In pairs, cover the words and test your partner.

ASKING FOR DIRECTIONS

a **6.16** Allie and Mark are trying to find the restaurant. Cover the dialogue and listen. Can you mark King Street on the map?

YOU SAY YOU HEAR

Excuse me. Where's King Street, please?

Excuse me. Is King Street near here?

Thank you.

Excuse me. Can you tell me the way to King Street?

Sorry, could you say that again, please?

Thank you.

¹ Sorry, I _____ know.

² King Street? It's _____ here but I don't know exactly _____. Sorry.

³ Yes. Go _____ on. Go past the church, and then turn _____ at the traffic lights. And then I think it's the _____ on the right.

Yes, go...



b Listen again. Complete the YOU HEAR phrases.

c **6.17** Listen and repeat the YOU SAY phrases. Copy the rhythm.

d In pairs, roleplay asking for and giving directions. A ask for the art gallery and the car park, B ask for the museum and the station. Start where Allie's car is.

Excuse me. Can you tell me the way to the art gallery?

Yes, go...

SOCIAL ENGLISH

a **6.18** Listen and complete the sentences.

- 1 Allie I'm sure she said the _____ on the right.
- 2 Mark I don't think he knows. He's a _____.
- 3 Allie Can you see anywhere to _____?
- 4 Mark Do you think you can park in that _____?
- 5 Allie Are you saying I _____ park?

b Do they enjoy their dinner?

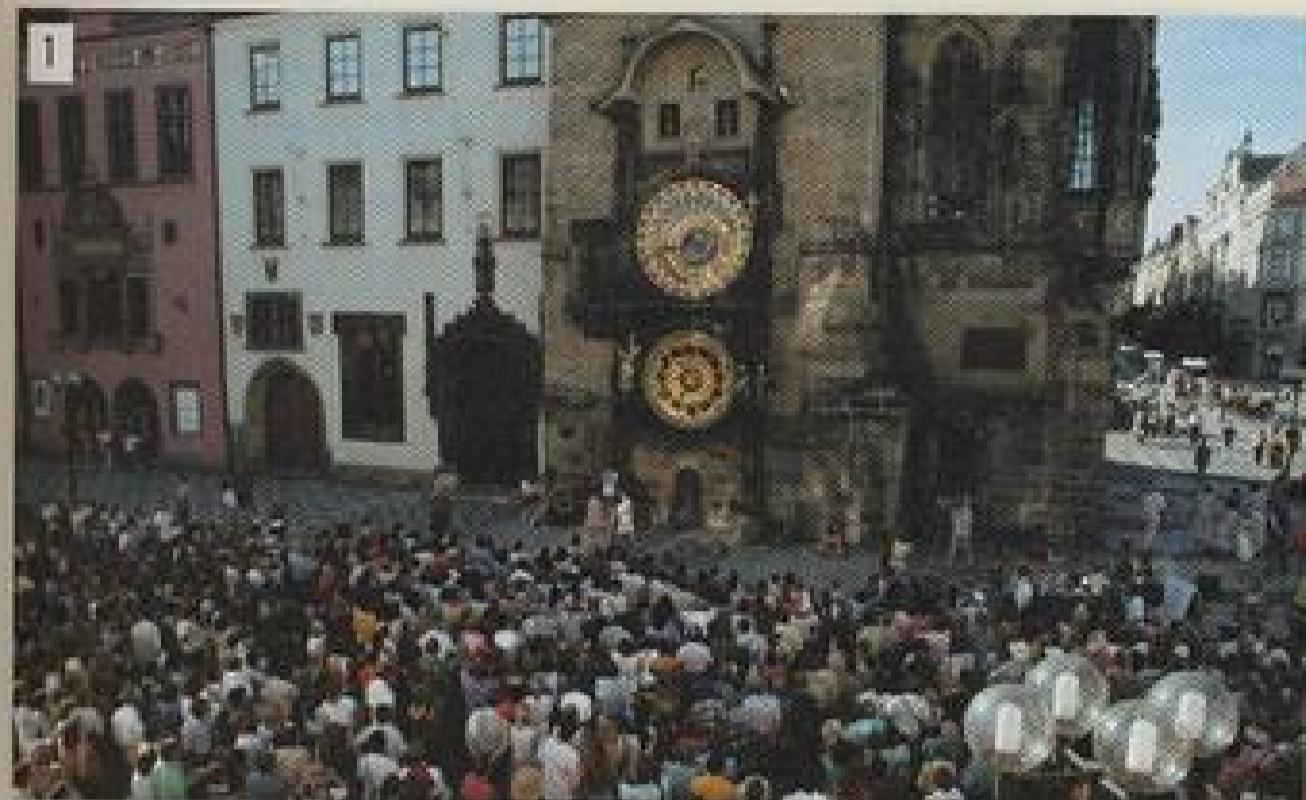
c Who says the USEFUL PHRASES, Mark or Allie? Listen again and check. How do you say them in your language?

USEFUL PHRASES

Let's ask that man there.
Excuse me! We're lost.
You see. I was right. (opposite = *wrong*)
Here it is.
I'm only joking.



a Look at the two postcards. Do you know which city it is?



b Quickly read Melanie's postcard. Which postcard is it?

Dear Kim,

Hope you're OK. We ____ (have) a great holiday here!
 We ____ (arrive) four days ago, and we ____ (stay) in
 a small hotel in the old town. Yesterday morning we
 ____ (go) to see the castle, and in the afternoon we
 ____ (visit) a beer factory.

At the moment we ____ (sit) in a café in the main
 square. It's really beautiful. There ____ (be) a
 wonderful old clock - you can see it in the picture.

My favourite area is Mala Strana. It's the old part
 of Prague and it's fantastic. There ____ (be) a lot of
 nice restaurants, and we usually ____ (go) for a walk
 there in the evening and then ____ (have) dinner.

You'd really like it.

See you next week!

Love,

Melanie

PS Matthew sends his love.



Kim Williams

8 Freeman Place

Clifton

Bristol BS4 6MR

England

c Read the postcard again. Put the verbs in the correct form (present simple, present continuous, or past simple).

WRITE a postcard to another student. Imagine you're on holiday in another town or city. Give this information.

- Are you having a good time?
- When did you arrive?
- Where are you staying?
- What did you do yesterday?
- Where are you at the moment?
- What are you doing?
- Say something about the town / city.
- Say what you usually do in the evening.

Check your postcard for mistakes.